

# CHROMOGEN™

Broadcast Color Hardener and Powdered Release Agent

## PRODUCT DESCRIPTIONS

**CHROMOGEN™ Broadcast Color Hardener** is a professional grade, ready-to-use, powdered dry-shake, pre-colored hardener engineered and formulated to be easily applied to color freshly placed concrete. Applications include slabs, flatwork and new decorative stamped poured in place concrete.

**CHROMOGEN™ Powdered Release Agent** is a powdered, color bond breaking release for use when imprinting and stamping concrete to create unique coloring and antiquing effects.

Custom colors including Black and White are available upon request.

Read and understand all Technical Data Sheets before use. Visit our website, [www.chaoticpigments.com](http://www.chaoticpigments.com) for the most current versions and updates.

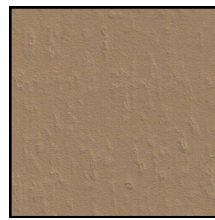
For professional use only.

Worldwide availability and technical support.

For additional information contact:



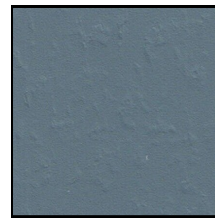
[www.chaoticpigments.com](http://www.chaoticpigments.com)



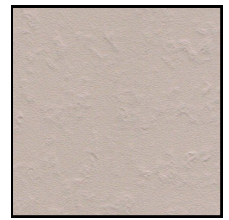
Baja Tan



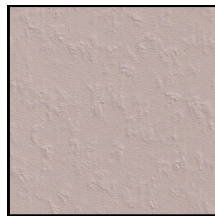
Bone White



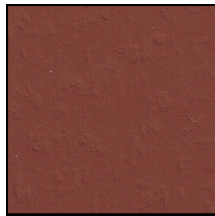
Slate Blue



Beige Paste



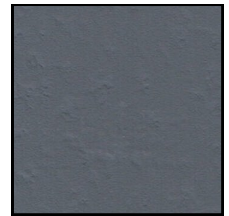
Light Blush



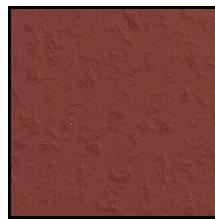
Brick Red



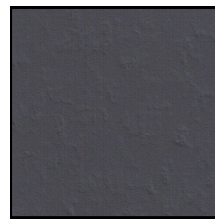
Sandstone Beige



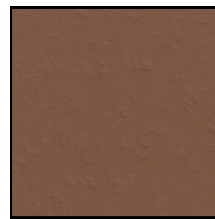
Stone Gray



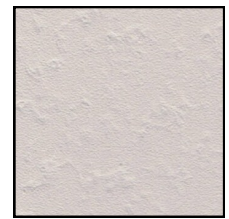
Dark Red



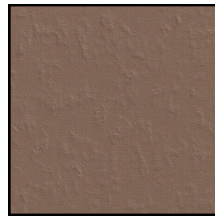
Dark Charcoal



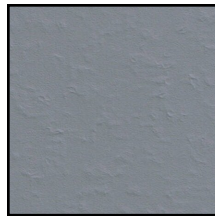
Autumn Brown



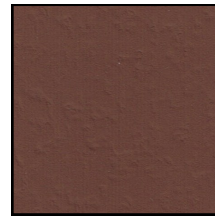
Tusk White



Milk Chocolate



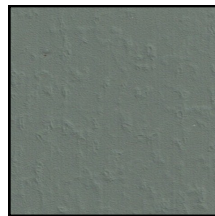
Platinum Gray



Russet Rue



Palomino Tan



Green Slate



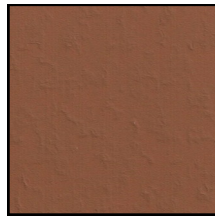
Nevada Beige



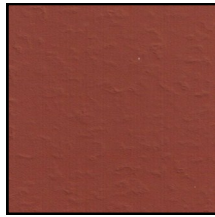
San Diego Buff



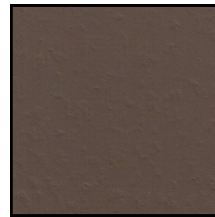
Cement Gray



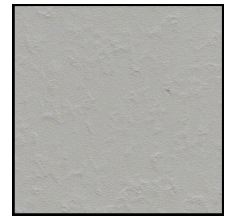
Terra Cotta



Mason Red



Walnut Brown



Old Sage

Color selections on this chart approximate as closely as possible the appearance of the finished color. Variations can be expected due to job conditions, finishing techniques, and types of sealer used. Powdered release is intended for surface highlighting and will not exactly match this chart. Some combinations of products can produce dramatically different results than anticipated. It is recommended that mock-up's or samples be produced to determine actual color finishes.